

## Construction site advertising

barrier jackets, both sides printed differently

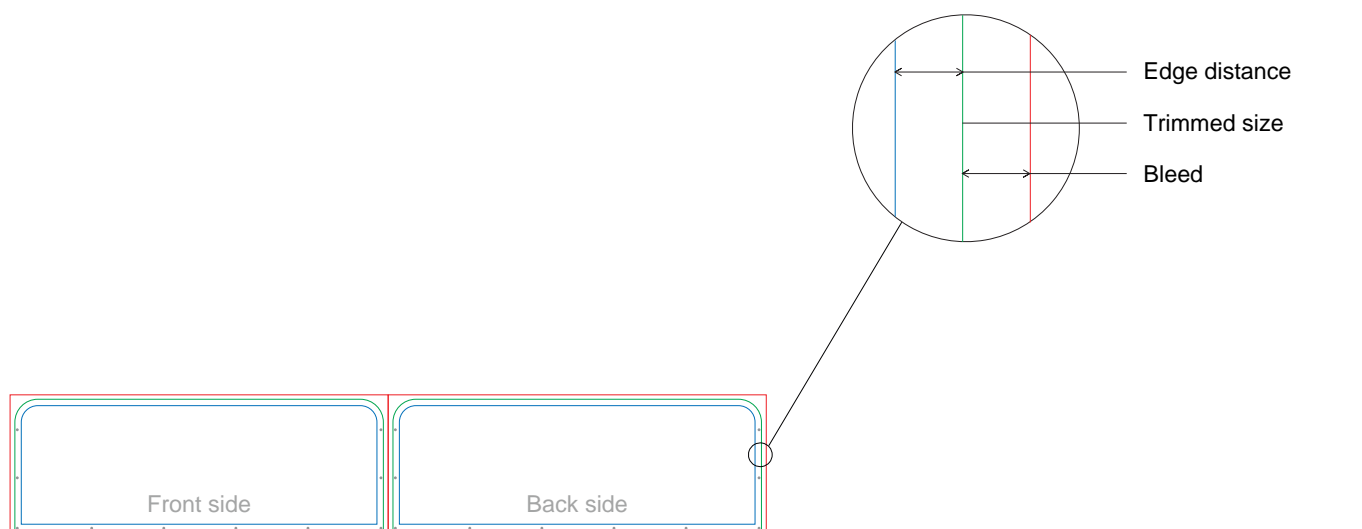
2 prints: 230 x 82 cm each (Width x Height) for barrier: 230 x 110 cm, Data format: 472,0 x 86,0 mm

**Material:** non-woven polyester, matt, approx. 150 g/m<sup>2</sup>

**Finish:** sewn together at top edge, other sides cut and provided with 20 metal eyelets Ø 10 mm every 50 cm, sides can be fixed at barrier fence by cable ties (please order separately)

### Please note:

- **Data format:** Scale 1:10, final format + bleed
- **Colors:** CMYK, HKS, Pantone, RAL possible – do not convert spot colors to CMYK
- **Rich black (digital print):** Use spot color "Schwarz"
- **Resolution:** 800 – 1200 dpi (Scale 1:10)
- **Line thickness:** min. 0.5 mm (positive), 1 mm (negative)
- **Fonts:** Convert to curves/paths
- **Cutting paths:** Only as a design aid – be sure to remove before saving the print data
- **Page layout:** Please design all elements on page 2 of the template



### Reference lines

#### Edge distance

Place important design elements within the blue line so that they are not obscured or cut off in the final product.

#### Trimmed Size

The green line shows the size of your finished product.

#### Bleed

Extend background colors and images to the red line to avoid white borders in the finished product.

- Eyelet

Drawing is not true to scale.

